

make it personal with a

tufftable®

Sutcliffe 1887

tufftable®

beauty rests on utility



take any chair, add a table and dress with plates of food.

tufftable® lets a **perfect finish** stay that way

A collection to suit all kitchen dining needs with styles ranging from shaker to traditional.

All tufftables are:

- heat resistant
- scratch resistant
- stain resistant
- easy care



'don't make something unless it is both
necessary and useful; but if it is both
necessary and useful, don't hesitate to
make it beautiful'

shaker quote

tufftable[®]

created for **everyday life**





1111 - Draw leaf square table
H 77cm W 130cm (open) 80cm (closed) D 80cm



1141 - D end gate leg table
**H 75cm W 132cm (open) 44cm (closed)
 D 90cm**



1126 - Compact drop leaf table
**H 75cm W 90cm (open)
 44cm (closed) D 65cm**



1123 - Fixed round top with legs
1121 - Fixed square top with legs
H 75cm W 90cm D 90cm



1124 - Drop leaf round top with legs
1122 - Drop leaf square top with legs
H 75cm W 90cm (open) 63cm (closed) D 90cm



1131 - Fixed square top with pedestal base
1133 - Fixed round top with pedestal base
H 75cm W 90cm D 90cm

many tables are
 available in both
 square and round
 options



Fixed rectangular table (various sizes)
1151 H 75cm W 120cm D 90cm
1152 H 75cm W 140cm D 90cm
1153 H 75cm W 180cm D 90cm

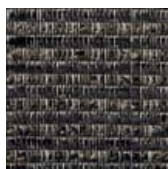
All dimensions are approximate and are shown in centimetres. Images are not shown to scale. **SH** refers to seat height. Colours are shown for illustrative purposes only. Whilst every care has been taken to ensure details are correct at time of going to press, this information is for guidance only. All colours are shown reproduced as faithfully as four colour printing process will allow.

A collection of 7 versatile casual dining tables with **tufftable**[®] tops, resistant to scratches, stains and heat. In a choice of 9 finishes: beech, English oak, mid oak, white, ivory, anthracite, champagne, sand and coffee. Chairs and bases can be finished in a lacquered wood or paint option of either white, ivory, French grey, taupe, sage, natural, mid oak and English oak.

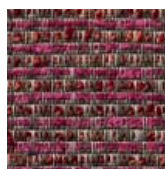
fabric choices



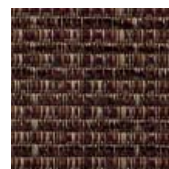
SR 13914
Hendon weave
cedar



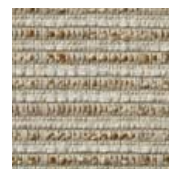
SR 13907
Hendon weave
slate



SR 13910
Hendon weave
rose



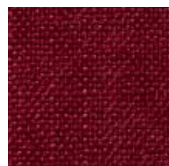
SR 13901
Hendon weave
coco



SR 13903
Hendon weave
linen



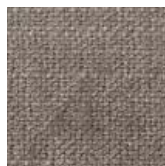
SR 13902
Hendon weave
sand



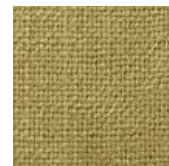
Col 36
Senna
red



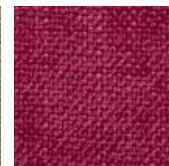
Col 13
Senna
hopsack



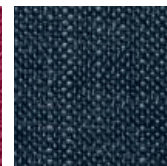
Col 15
Senna
stone



Col 04
Senna
lime



Col 26
Senna
rose



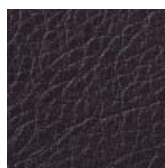
Col 24
Senna
denim



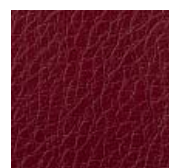
**Orkney
granite**



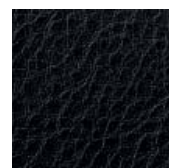
**Orkney
dove grey**



**Saddle
chocolate**



**Saddle
ox blood**



**Saddle
black**



1223 - Standon
fully upholstered
high back chair
H 94cm W 45cm
D 62cm SH 45cm



1211 - Hertford
upholstered seat
H 107cm W 46cm
D 48cm SH 47cm



1212 - Hertford
upholstered
seat and back
H 107cm W 46cm
D 48cm SH 47cm



1210 - Hertford
wooden seat
H 107cm W 46cm
D 48cm SH 47cm



1221 - Cheshunt
upholstered seat
H 86cm W 45cm
D 49cm SH 48cm



1222 - Cheshunt
upholstered seat
and back
H 86cm W 45cm
D 49cm SH 48cm



1220 - Cheshunt
wooden seat
H 86cm W 45cm
D 49cm SH 48cm

choose your **finish**

tabletop wood finishes



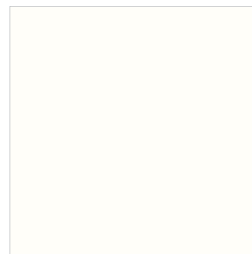
Beech
tuffable®



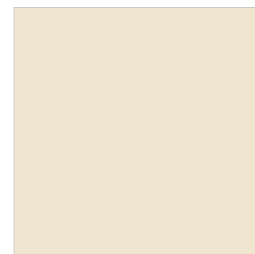
English Oak
tuffable®



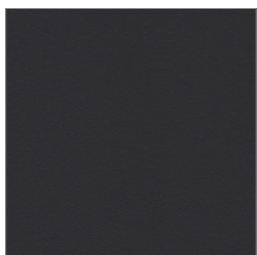
Mid Oak
tuffable®



White
tuffable®



Ivory
tuffable®



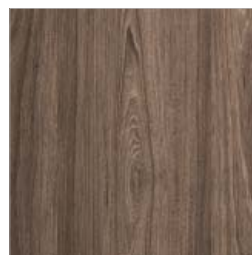
Anthracite
tuffable®



Champagne
tuffable®



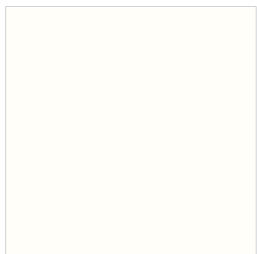
Sand
tuffable®



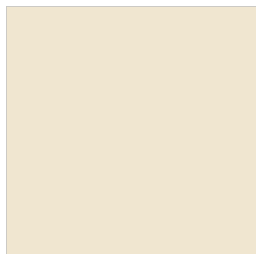
Coffee
tuffable®

tuffable®

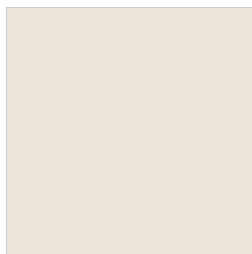
chair and base finishes



White
paint swatch



Ivory
paint swatch



French Grey
paint swatch



Taupe
paint swatch



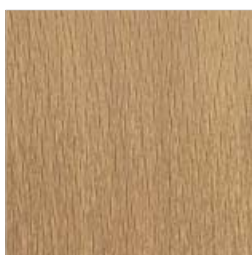
Sage
paint swatch



Natural
lacquered wood finish



Mid Oak
lacquered wood finish



English Oak
lacquered wood finish

Sutcliffe Furniture

Frostholme Mill, Burnley Road,
Cornholme, Todmorden,
West Yorkshire,
OL14 7ED, England

Tel: 01706 815133 **Fax:** 01706 818701

Email: sales@sutcliffefurniture.co.uk

www.sutcliffefurniture.co.uk